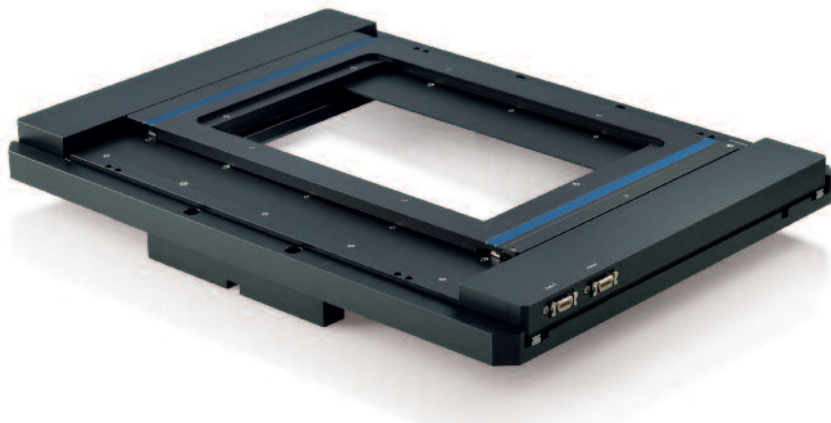


Motorized Microscope Stage



Preliminary Data

	M26821LNJ	M26821LOJ	Units	Tolerance
	System with M-687.UN for Nikon microscopes	System with M-687.UO for Olympus microscopes		
Active axes	X, Y	X, Y		
Motion and positioning				
Travel range	135 x 85	100 x 75	mm	
Integrated sensor	Linear encoder	Linear encoder		
Sensor resolution	0.1	0.1	µm	
Bidirectional repeatability	0.4	0.4	µm	
Pitch / Yaw	±300	±300	µrad	typ.
Max. velocity	120	120	mm/s	
Reference point switches	Optical, 1 µm repeatability	Optical, 1 µm repeatability		
Limit Switches	Hall-effect	Hall-effect		
Mechanical properties				
Max. load	50	50	N	
Miscellaneous				
Operating temperature range	20 to 40	20 to 40	°C	
Material	Al (black anodized)	Al (black anodized)		
Mass	3.2	3.8	kg	±5 %
Piezomotor controller	C-867.262 with USB joystick (included in delivery)			
Communication interfaces	USB, RS-232, Ethernet			
I/O Connector	4 analog/digital in, 4 digital out (Mini-DIN, 9-pin) digital: TTL; analog: 0 to 5 V, USB joystick			
Command set	PI General Command Set (GCS)			
User software	PIMikroMove			
Software drivers	LabVIEW drivers, GCS-DLL, dynamic link libraries for Windows (DLL) and Linux			
Supported functionality	Start-up macro, macro, data recorder / trace memory, MetaMorph, µManager, MATLAB			
Controller dimensions	320 x 150 x 80.5 mm (including mounting rails)			